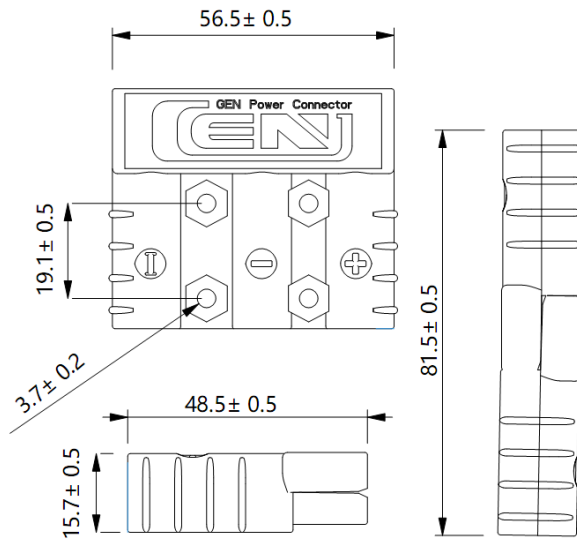


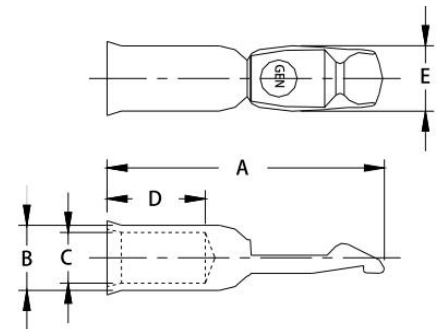
### SE50-3 Housing/SE50-3胶壳



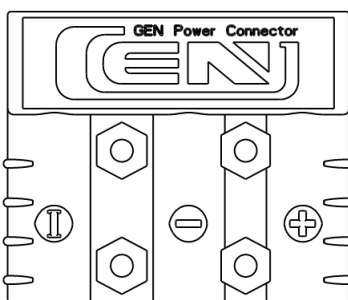
Part Number 零件料号	Housing Color 胶壳颜色
SE991G1	Red 红色
SE991	Gray 灰色

单位：MM

### SE50 Contact /SE50端子



Part Numbers 料号	Mating Force 锁紧力	Wire Size/线径		-A-		-B-		-C-		-D-		-E-	
		AWG	mm <sup>2</sup>	Inch	mm	Inch	mm	Inch	mm	Inch	mm	Inch	mm
SE5900	High 高	6	13.3	1.18	30	0.28	7.1	0.22	5.6	0.43	10.9	0.28	7.1
SE5915	High 高	10/12	5.3/3.3	1.18	30	0.28	7.1	0.14	3.5	0.43	10.9	0.28	7.1
SE5952	High 高	8	8.4	1.18	30	0.28	7.1	0.19	4.8	0.43	10.9	0.28	7.1



#### FEATURES

- **Mechanical keyed housings**  
Prevents accidental mating of components  
Operating at different voltage levels
- **Flat wiping contact system**  
Minimal contact resistance at high current  
Wiping action cleans contact surface during connection/disconnection
- **Genderless design**  
Makes assembly quick and easy and  
Reduces number of parts stock

#### 特征

- **机械键控外壳**  
可防止运行在不同电压等级下的设备意外接插
- **平面接触系统**  
在大电流下保持最小的接触电阻，插拔过程中产生擦拭动作会自动清洁接触件表面氧化层
- **无公母设计**  
安装简易快捷，减少零件库存

## Connector Specifications/连接器技术规格

Rated current(Amperes) 额定电流(安培)	50A
Voltage Ratings (Volts) 额定电压(伏特)	600V
Contact Barrel Wire Size[AWG]导线尺寸[AWG] mm <sup>2</sup>	6-12AWG 13.3-3.3mm <sup>2</sup>
Maximum Wire Insulation Diameter[inches] 最大导线绝缘直径[inches] mm	0.44inches 11.2mm
AVG Contact Resistance(micro-ohms) 平均接触电阻(微欧)	200
Insulation Withstanding Test Voltage (Volts AC/DC) 绝缘耐电压 (伏交流/直流)	2200V
Contact Retention Force (Ibf) 端子保持力(磅)	50Ibf
Life寿命 a.No load (Contact/Disconnect Cycles) 无负载(端子插拔次数) b.under Load (Hot Plug 250 cycles @ 120V) 带负载(120V热插拔250次)	To 10,000  50A
Contact Material 端子材料	Silver plated copper 铜镀银
operating Temperature Range °C 工作温度范围 °C °F	-20 °to 105 ° -4 °to 221 °
Flammability Rating of Housing Material 外壳防火等级	UL 94-V0

## Temperature rise charts /温升曲线图

